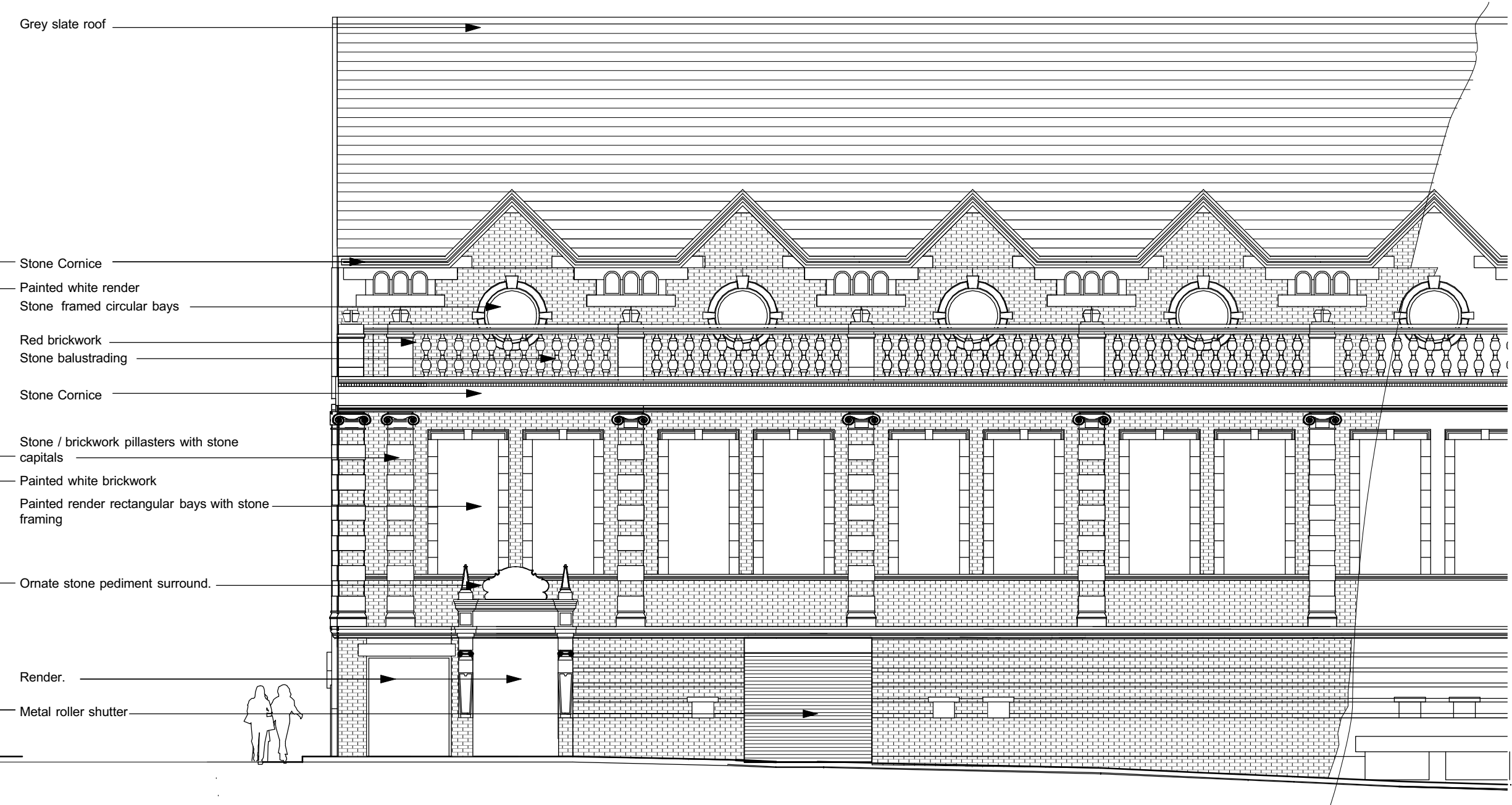
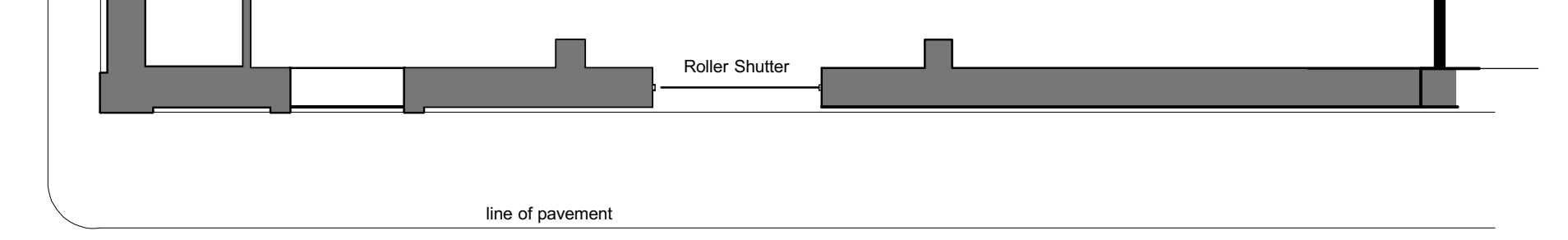


EXISTING SIDE ELEVATION (REAR LANE) 1:100



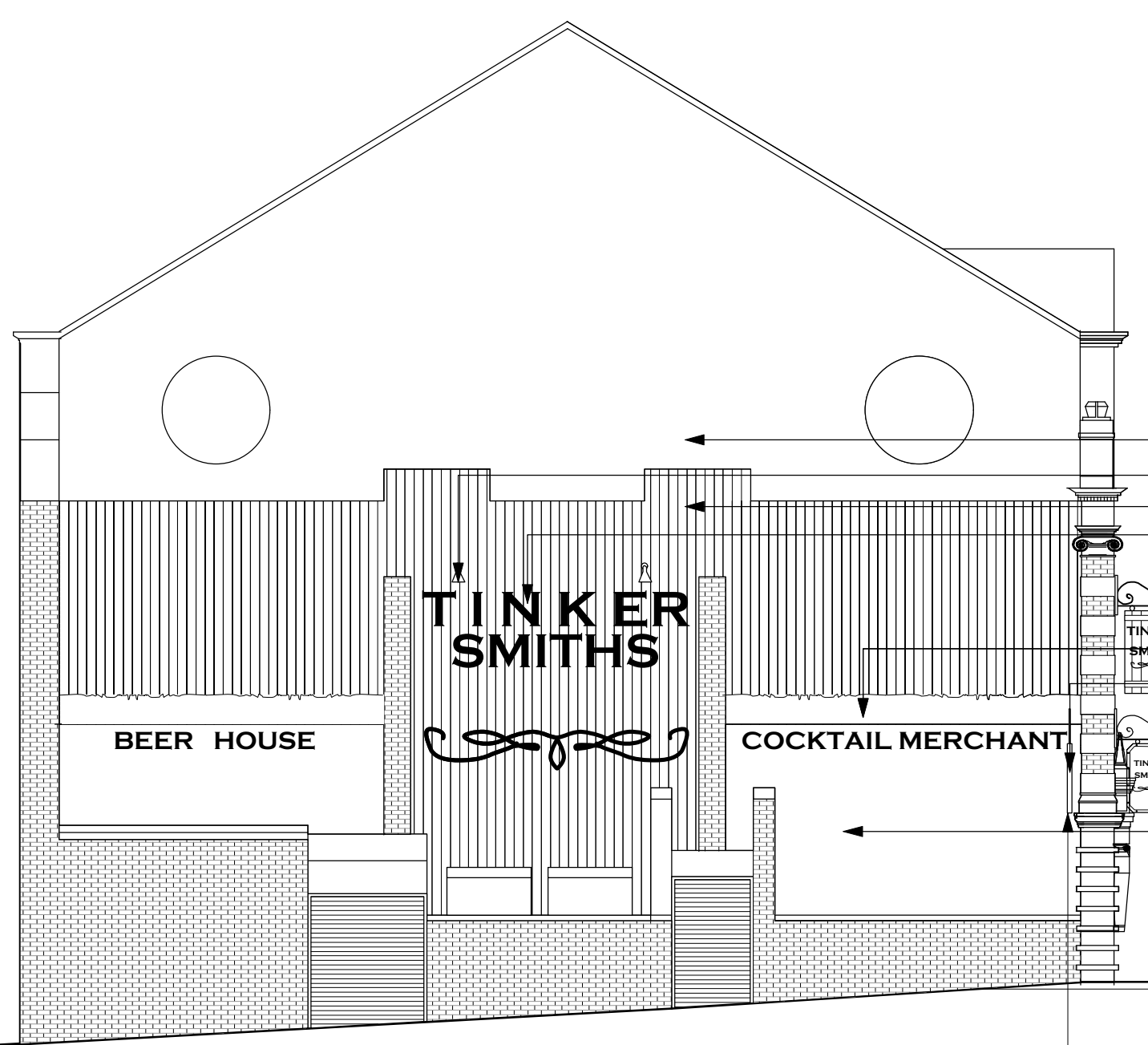
EXISTING FRONT ELEVATION (STANHOPE STREET) 1:100



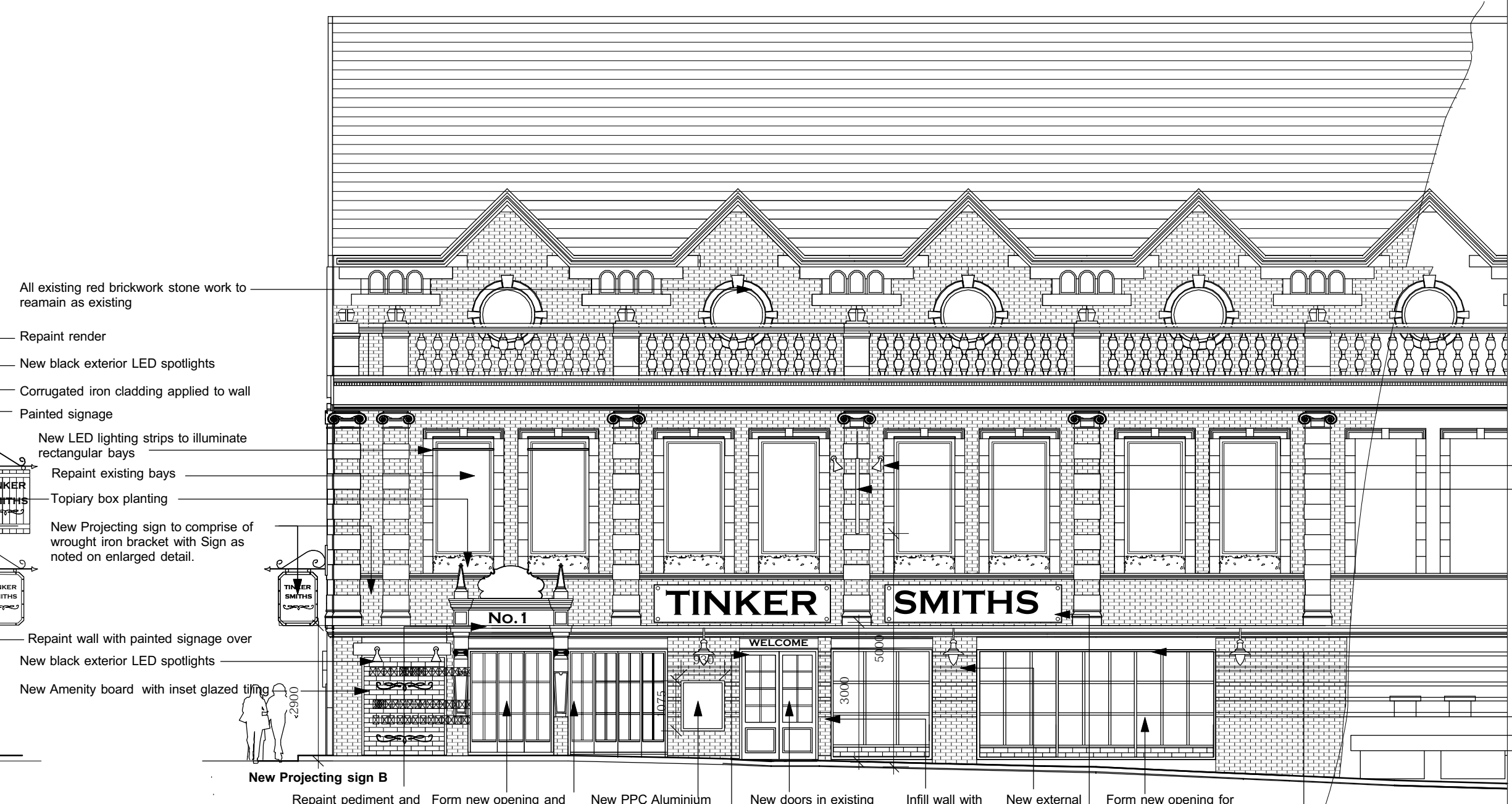
EXISTING SHOPFRONT LAYOUT (STANHOPE STREET) 1:100



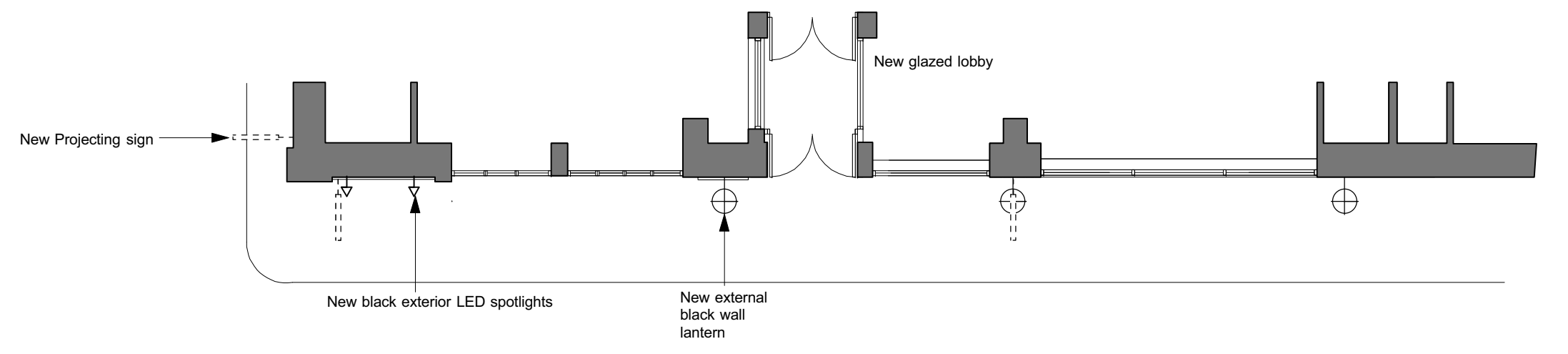
EXISTING FRONT ELEVATION (STANHOPE STREET) 1:200



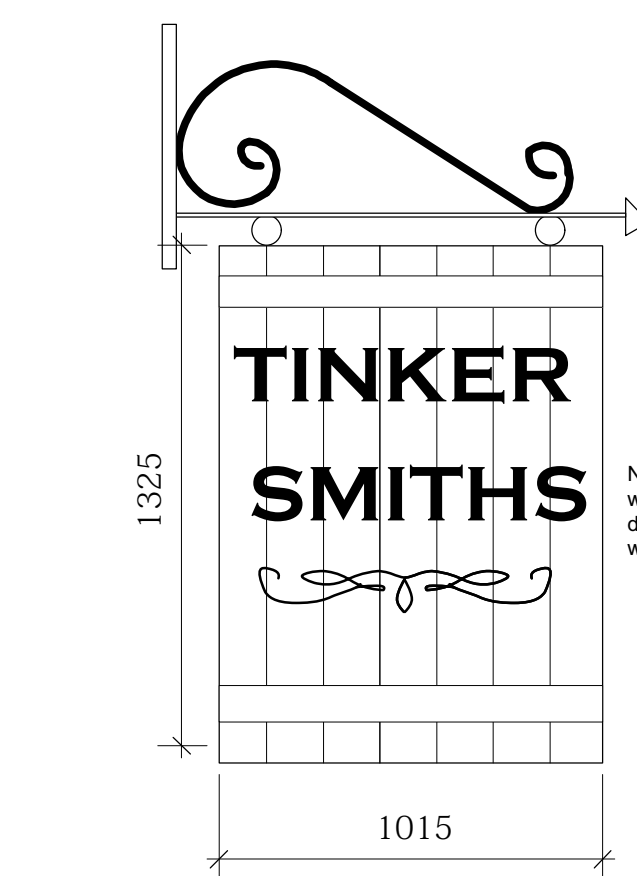
PROPOSED SIDE ELEVATION (REAR LANE) 1:100



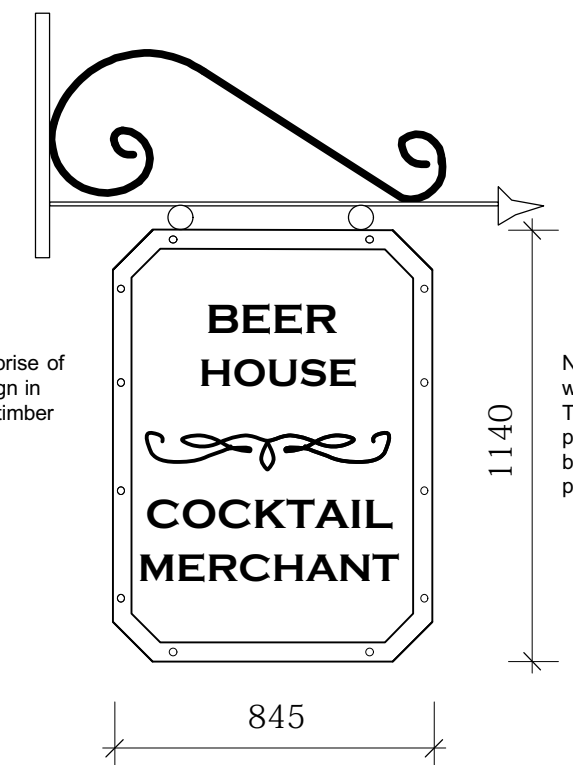
PROPOSED FRONT ELEVATION (STANHOPE STREET) 1:100



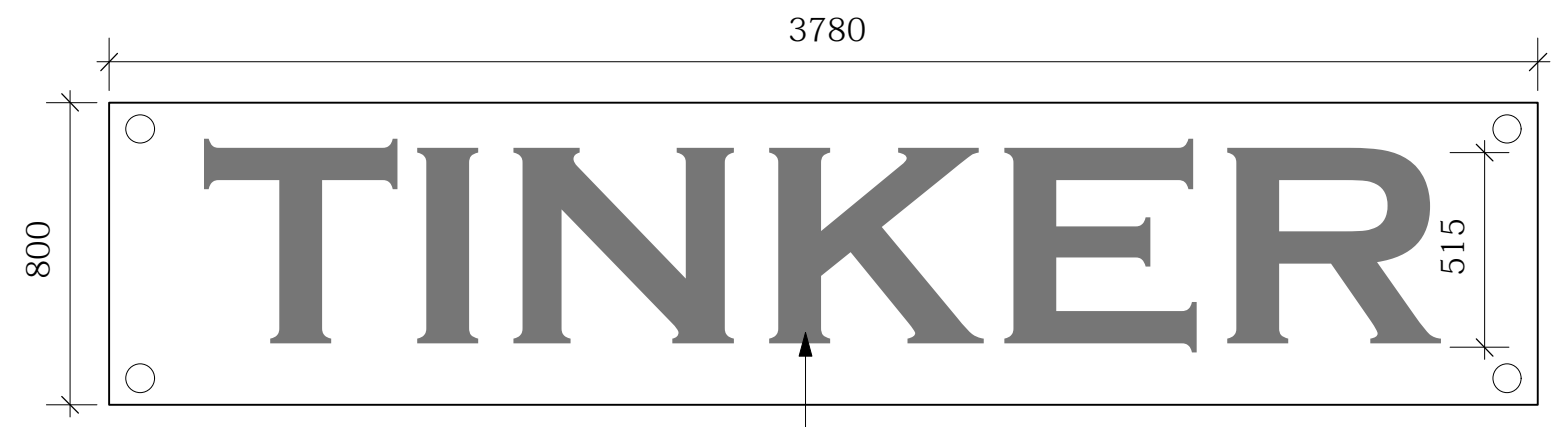
PROPOSED SHOPFRONT LAYOUT (STANHOPE STREET) 1:100



PROJECTING SIGN A 1:20



PROJECTING SIGN B 1:20



FASCIA SIGN A 1:20

- All existing red brickwork stone work to remain as existing
- Repaint render
- New black exterior LED spotlights
- Corrugated iron cladding applied to wall
- Painted signage
- New LED lighting strips to illuminate rectangular bays
- Repaint existing bays
- Topiary box planting
- New Projecting sign to comprise of wrought iron bracket with Sign as noted on enlarged detail.
- Repaint wall with painted signage over
- New black exterior LED spotlights
- New Amenity board with inset glazed 900mm
- New Projecting sign B
- Form new opening and insert new doubled glazed fold back doors in dark grey painted timber
- New PPC Aluminium glazed amenity board.
- New applied 3-d GRP letters over entrance doors
- New doors in existing opening in dark grey painted timber with meshglazed upper panels existing bricks
- Infill wall with reclaimed bricks black wall from utilising existing bricks
- New external black wall lantern
- Form new opening for window bays .Windows formed in doubled glazed dark grey painted frames Lower panels to be insulated cavity wall construction with external faces clad in black glazed 100 x 300mm tiles in brick bond effect.
- Exposed steel beams to window openings to structural engineers details.
- New signage to fascia to comprise of distressed steel panel fret cut to wording as shown to allow for Back LED illumination to shine through.
- New glazed lobby
- New black exterior LED spotlights
- New external black wall lantern

New Projecting sign to comprise of wrought iron bracket with sign in distressed painted planked timber with painted signage over

New Projecting sign to comprise of wrought iron bracket with Sign in Tarnished m/steel outer frame with painted distressed metal inner with built up wording and graphics in painted m/steel

Distressed M/steel fascia panel fixed on legs fret cut out letters in typeface Copperplate gothic bold back lit with yellow Exterior LED lighting strip

Concealed yellow Exterior LED lighting strip

Black external spots to illuminate projecting sign

Revision	
muperspective interior commercial architecture	
project Former viva rear unit Proposed bar Stanhope Street South Shields	
client	Mr.L.Campbell
title	Existing & Proposed External Details
drawing No.	LC- 15-04
scale	1 : 100/20 @ A1
date	May 15
ALL DIMENSIONS TO BE CHECKED ON SITE BEFORE WORK COMMENCES ANY DISCREPANCIES TO BE REPORTED TO SUPERVISING OFFICER	